





GMC

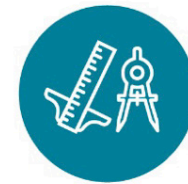
Goodwyn Mills Cawood



Architecture



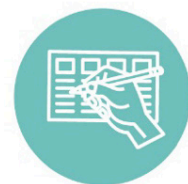
Interior Design



Engineering



Landscape



Planning



Environmental



Surveying



Geotechnical



Transportation



GIS



Electrical



Disaster Recovery



GMC

+

City

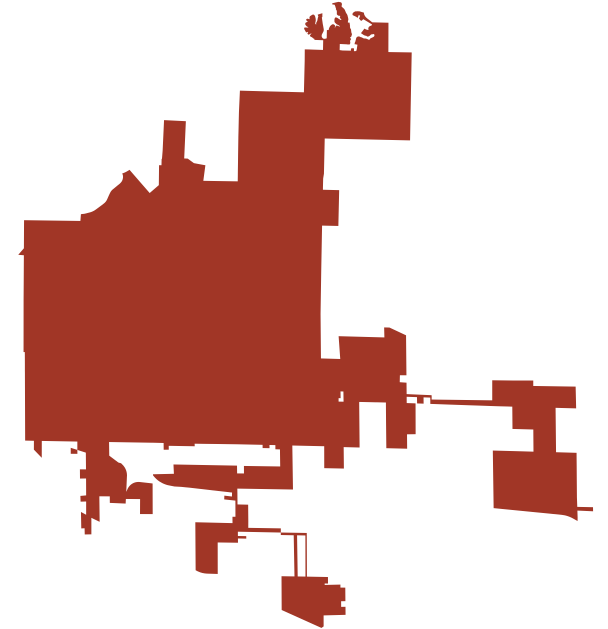
Which one is Gadsden?



A



B



C

B



An aerial, high-angle photograph of a busy city street. The street is filled with many pedestrians walking in various directions. The shadows of the people are cast long and dark on the pavement, suggesting a low sun position. The overall scene is a dense, active urban environment.

**What is a
comprehensive plan?**

An aerial, high-angle photograph of a busy city street. The street is filled with a large number of pedestrians walking across a wide crosswalk. The shadows of the people are cast long and dark on the pavement, suggesting a low sun position. The overall scene is one of a dense, active urban environment.

**A shared, future vision
for the city, and how to
implement it.**

Land Use



Parks & Recreation



Housing



Economy



Environment



Infrastructure & Facilities



Transportation



4 Phases of Planning Process

Understand

Define

Create

Implement

Why “connect” with the community?

Build Consensus

Develop a common vision that reflects the true values of your city



Intentionality

To address current opportunities and tackle challenges



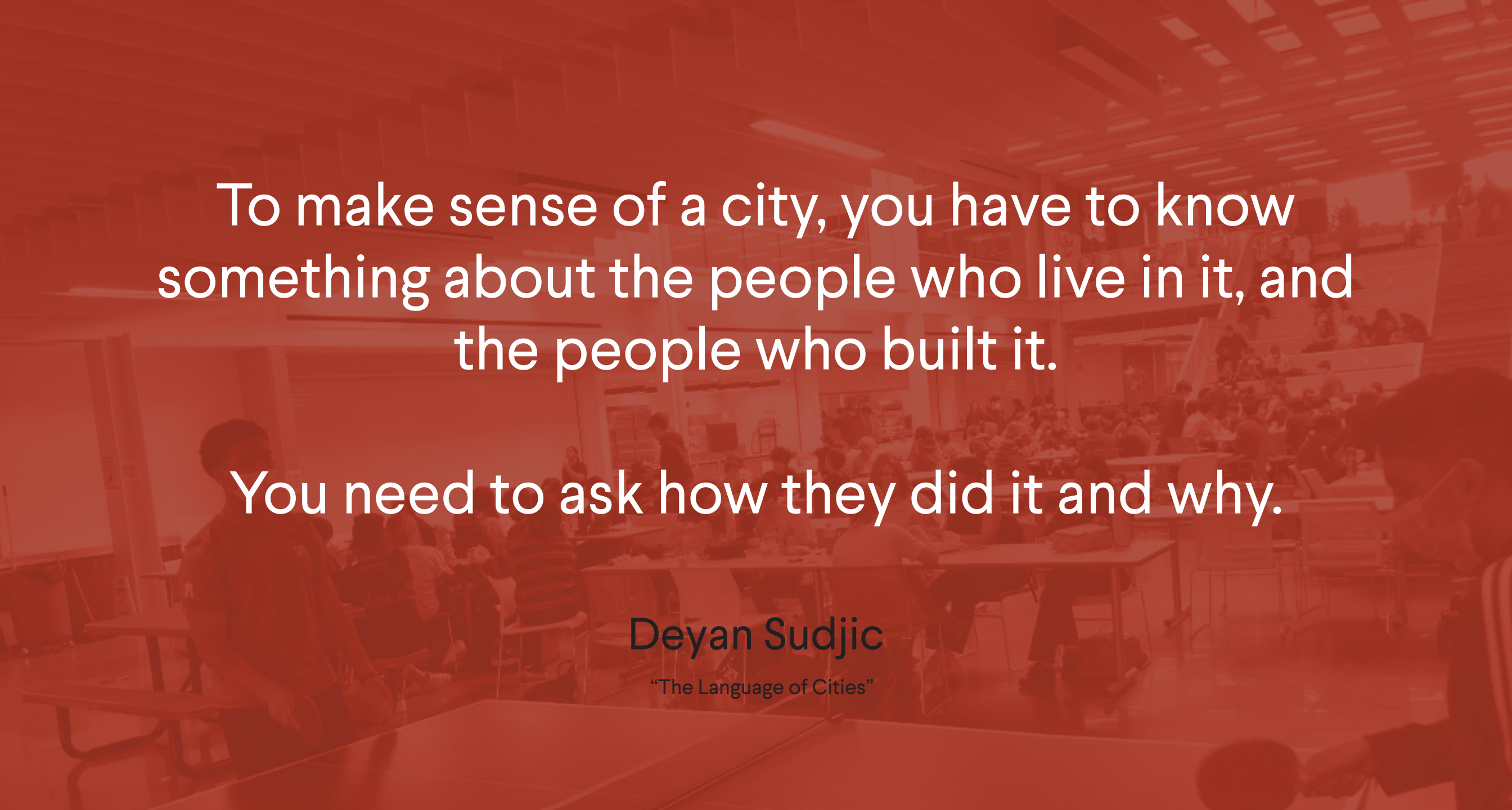
Empowerment

Having a voice in the planning process to make decisions about the future of your city



Ownership

To assume responsibility of the plan because it is “your plan”



To make sense of a city, you have to know something about the people who live in it, and the people who built it.

You need to ask how they did it and why.

Deyan Sudjic

“The Language of Cities”

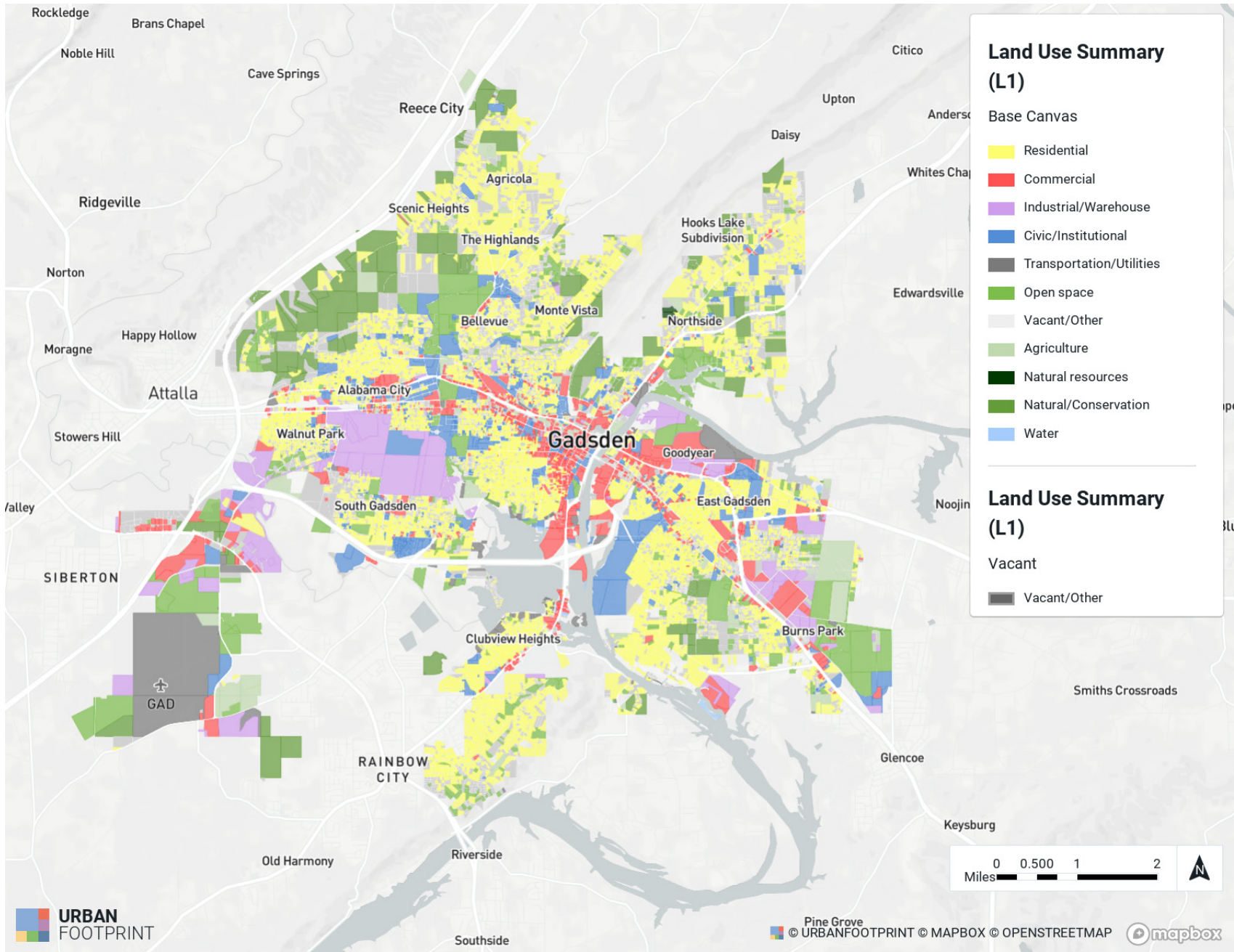
“Cities have the capability of providing something for everybody, only because, and only when, they are created by everybody.”

Jane Jacobs

“The Death and Life of Great American Cities”









- WiFi Hotspots
- Security Surveillance Cameras
- Facade/Building Edge Lighting
- E-bike
- Solar Panels
- Air Quality Measurement Sensor
- Interactive Wayfinding and Real-Time Transit Info
- Street Lighting
- Vehicular Traffic Signal
- Electric Car-Charging Station
- Mobile Safety Applications
- Speed-Tracking Cameras
- Parking Meters
- Street Signage Lighting
- Pedestrian Signals
- Cycle Signals
- Pedestrian-Level Lighting
- Active Street Frontage Lighting



“First we shape the cities –
then they shape us”

Jan Gehl

An aerial, high-angle photograph of a busy pedestrian crossing. The scene is filled with numerous people walking in various directions across a zebra-striped crosswalk. The lighting is bright, creating long, dark shadows of the pedestrians on the pavement. The overall image has a slightly desaturated, light gray tone, serving as a background for the text.

Maps

Who do we engage?

How do we inclusively engage
diverse demographics?



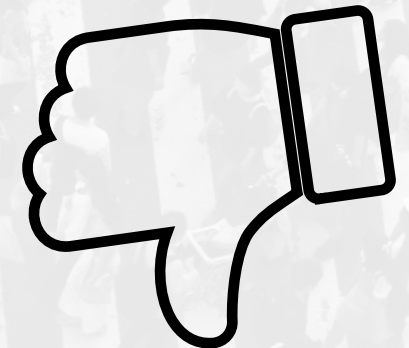
Do you think you will live in
Gadsden as an adult?

Why or why not?



**What do you like/dislike
about Gadsden?**

What's missing?



An aerial, high-angle photograph of a crowded city street. The street is filled with many people walking in various directions. Long, dark shadows are cast across the pavement, suggesting a low sun position. The overall scene is one of a busy, active urban environment.

Where in the city could
you take us and say,

“This is Gadsden”?

